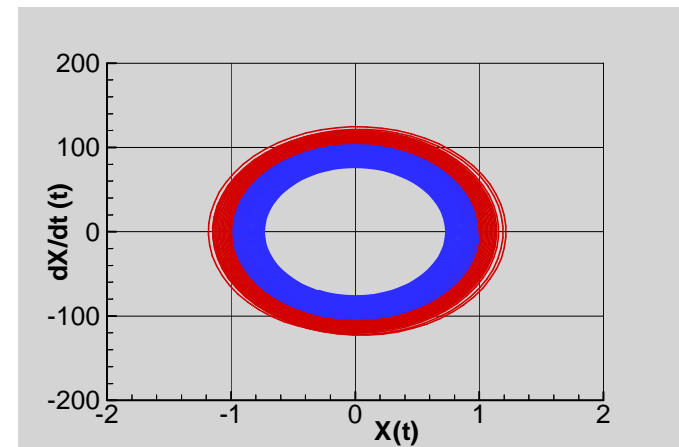
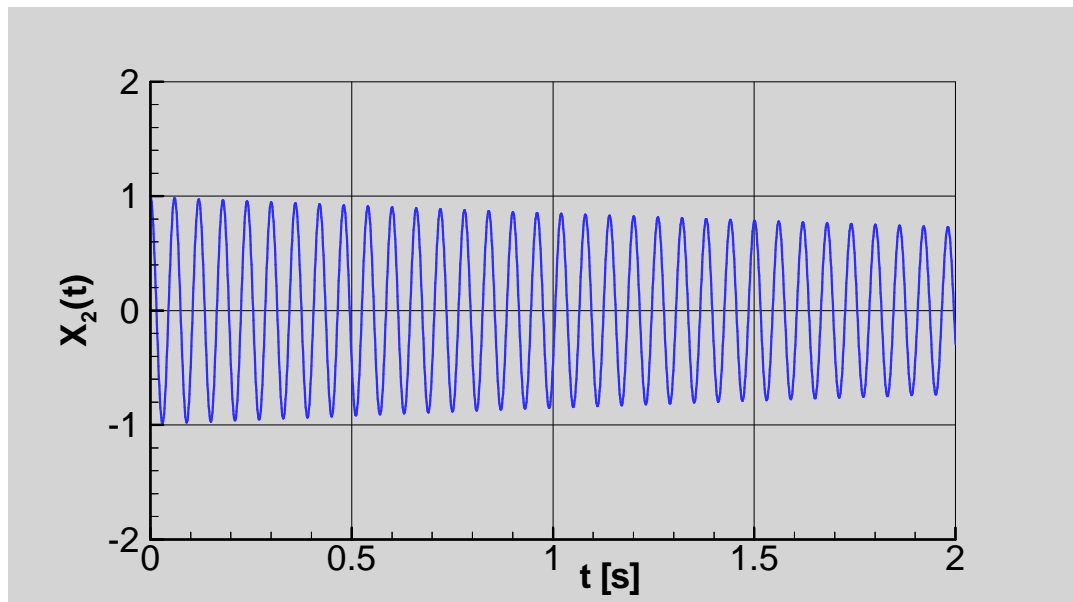
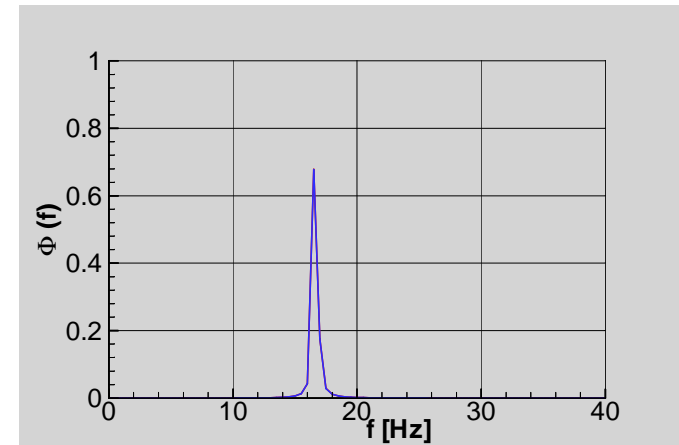
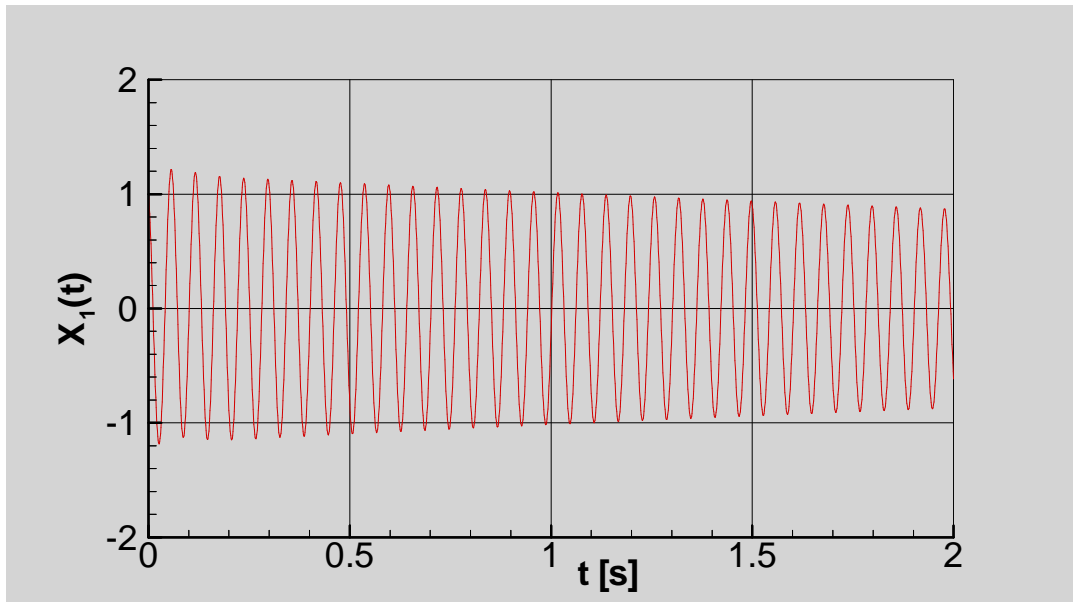


FLT2DQ - System of 2 DOFs including Airloads



Parameters:

$Y_{01} = 1.00$ m, $Y_{01}^* = -40.00$ m/s, $t_A = 0.00$
 $Y_{02} = 1.00$ m, $Y_{02}^* = 0.00$ m/s, $t_E = 2.0$
 $M_1 = 5.74E-02$, $M_2 = 4.67E-02$, $S_m = 0.00E+00$ [kg]
 $D_1 = 0.000E+00$ kg/s, $D_2 = 0.000E+00$ kg/s
 $K_1 = 41.7$ kg/s², $K_2 = 1.089E+03$ kg/s²
 $K_m = 0.000E+00$ kg/s², $f_s = -7.080E+03$ N/m
 $f_{01} = 4.288$ Hz, $f_{02} = 24.302$ Hz, $\kappa = 0.000$ kg/s²
 $a_0 = 0.00$ N, $f_0 = 2.50$ Hz, $\phi = 0.0$ [deg]
 $\omega^* = 0.000$ [-], $\xi_p = 0.500$ [-], $Ma = 0.000$ [-]

FLT2DQ_EPLD3D.INP for Structure EPLD3D

04.12.03 16:49

Author: Wolfgang Send - AE